

**AfiFree**



# AfiFree<sup>155i</sup>

Make Every Drop Count

## Essential Information in Your Hands The Ultimate Sheep & Goat Milk Meter

Approved by ICAR\*

### **Accurate on the spot information**

Now you can make practical decisions based on accurate animal health and milk quality information with AfiFree 155i by AfiMilk. The AfiFree 155i unit features a measuring chamber and an advanced electronic control display. The easy-to-read displays are installed at comfortable working heights for user-friendly control and keypad operation at each milking point in the parlor.

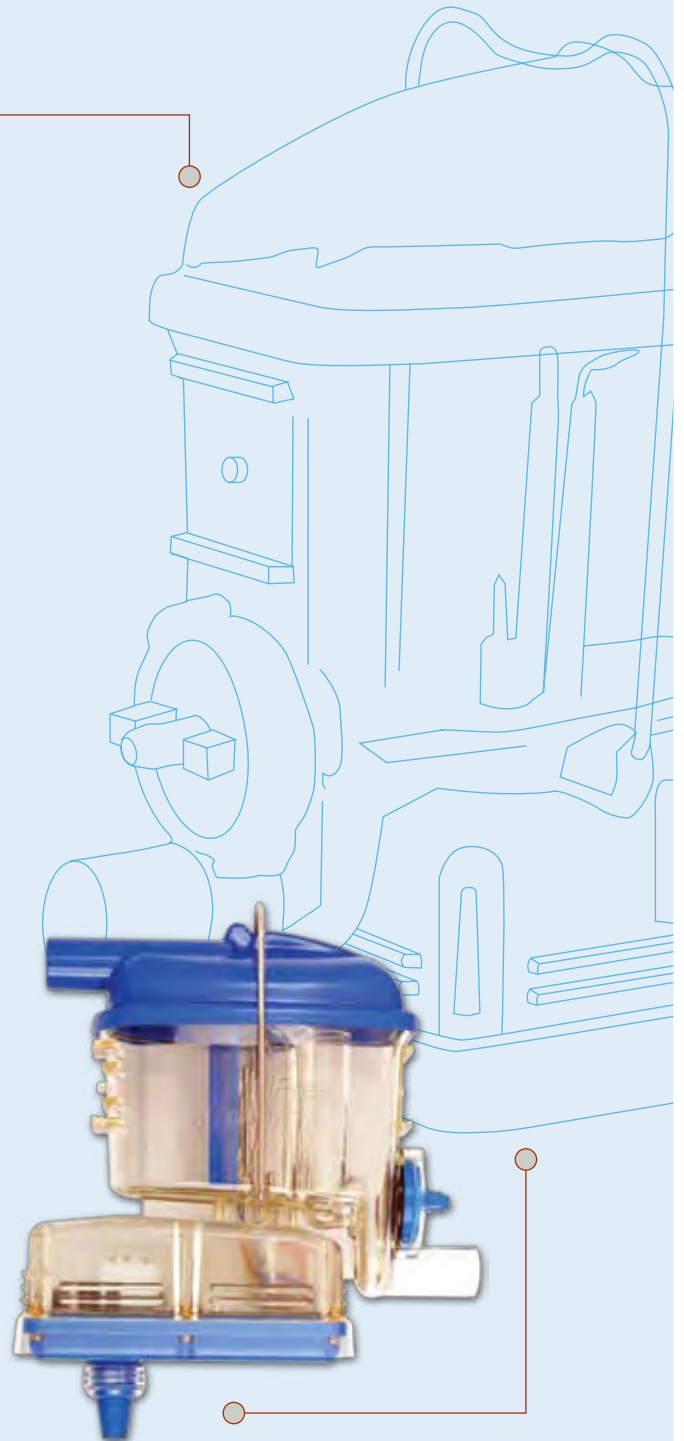
### **Smart and Simple**

AfiFree 155i helps you maximize profits by giving you on-the-spot alerts and information at the source. The LCD display provides you substantial animal data, health codes, kick off alert, mastitis alert, milk flow data, pulsation indication, animal fertility data and effortless data input.

In small animal production, every drop counts. AfiFree 155i gives you hands-on, accurate data at the source for smart decision-making. Connect it to the AfiShepherd management system and make every drop count for more.

\*ICAR - International Committee for Animal Recording

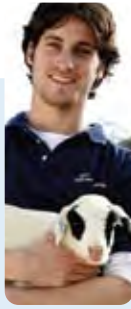
**AfiFree is the first milk meter approved by ICAR for both sheep and goat herds.**



**afimilk**<sup>®</sup>  
The Heart of the Dairy Farm

SAE Afikim Kibbutz Afikim, 15148 Israel  
Tel: 972-4-6754812, Fax: 972-4-6751862  
market@afimilk.co.il www.afimilk.com

# AfiFree



## Description

- AfiFree 155i consists of a small volume measuring chamber, an electronic display and control panel, installed at the milking point, within view and easy operational position.
- Convenient plug-in connector to computer network
- The chamber is cleaned with a minimum volume of water; built to withstanding boiling water
- The unit is solid state; no moving parts reducing maintenance to a minimum
- Simple push-button operation
- Big LCD display
- Optional configuration as a stand-alone unit



## Main Features

- Highly accurate free-flow measurements in 10 cc increments.
- Measures milk yield, electrical conductivity, milking times and flow rates.
- Milking stop automatically when there is a drop in the milk flow to prevent over-milking.
- Continuous real time communication with AfiShepherd, receives and sends messages in real time.



## Operational Features

- Easy visual alerts - bright green LEDs for milking status; bright red for critical alert
- "Vacuum Shut-off", "Pulsation frequency and ratio control", "Flow Controlled Pulsation Function", "Cow sorting option", "Stimulation option at start of milking", "External Start" and "Swing Over Side Detector" supported by two separate inputs.
- Milking Stall Failure warnings



## Benefits

- With AfiFree 155i installed in the milking parlor you have immediate, hands-on information about the animal at the milking point:

### Animal Data:

- The animal's number is displayed constantly after its identification.
- The current milk yield is displayed when milking starts.
- Animal lactation data.
- Flow rates are displayed.
- Health Codes alerting for problematic animals or those requiring special attention
- Kick-Off Alert
- Mastitis Alert - Real-time parlor alert when probability of Mastitis is high.

**AfiFree 155i is an integral component of the AfiShepherd management system that collects critical information automatically.**

**Maximize small animal herd production** - Make every drop count, with AfiFree 155i.

**afimilk**<sup>®</sup>  
The Heart of the Dairy Farm

Ver. 6-2009

# AfiFree